

[Technical data]

EMCOgroup

Designed for your profit

MAXXMILL 500

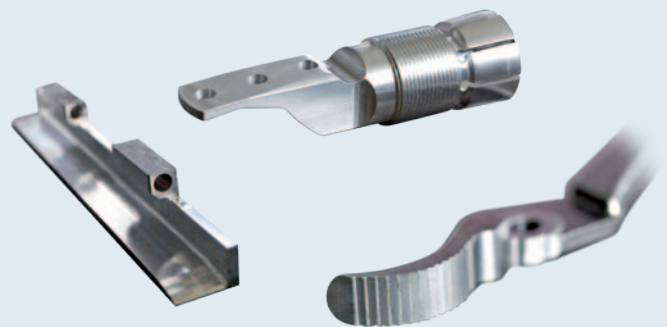
Travel and tolerances	
Travel in X (without 100 mm extra-stroke for tool change)	650 mm (25.6")
Travel in Y	550 mm (21.7")
Travel in Z	500 mm (19.7")
Distance spindle nose - table (min – max)	150/650 mm (5.9"/16.9")
Movement B axis (tilting)	+/-100°
Movement B axis (table)	0 – 360°
Positioning accuracy P according to VDI 3441 *	8 µm
Positioning repeatability Ps according to VDI 3441 *	3 µm
Positioning accuracy B axis (tilting – with motor encoder)	+/- 10 sec.
Positioning accuracy C axis (table – with motor encoder)	+/- 20 sec.
Feed	
Rapid motion speed X-Y-Z axis	30 m/min (1181.1 ipm)
Max. rotational speed B axis	25 rpm
Max. rotational speed C axis	25 rpm
Max. feed force X axis	5000 N (1124 lbs)
Max. feed force Y axis	5000 N (1124 lbs)
Max. feed force Z axis	5000 N (1124 lbs)
Max. acceleration X-Y-Z axis	3 m/s ²
Tilting table	
Clamping area	600 x 600 mm (23.6 x 23.6")
Table-floor distance	776 mm (30.6")
Slot number	5
Distance between two T-slots	100 mm (3.9")
Max. workpiece weight (equally distributed)	250 kg (551.2 lb)
Main spindle (mechanical spindle)	
Speed range	50 – 10000 rpm
Maximum spindle torque	70 Nm (51.6 ft/lbs)
Maximum spindle power	11 kW (14.8 hp)
Tool taper	ISO 40 DIN 69871
Pull stud	ISO 7388/2 type B
Drive	Direct with coupling

Main spindle (motor spindle)	
Speed range	50 - 15000 rpm
Maximum spindle torque	110 Nm (81.1 ft/lbs)
Maximum spindle power	34,5 kW (46,3 hp)
Tool magazine	
Number of tool stations	30
Tool changing type	With changing arm
Tool management	Random
Tool changing time (tool-tool)	1.6 sec
Max. tool diameter	80 mm (3.1")
Max. tool diameter (without neighbouring tools)	125 mm (4.9")
Max. tool length	250 mm (9.8")
Max. tool weight	8 kg (17.6 lb)
Total tool weight supported by the magazine	100 kg (220.5 lb)
Coolant tank	
Tank capacity	250 l (66.0 gal)
Standard pump pressure	2 bar (29.0 PSI)
Max. capacity at 2 bar	40 l/min (10.6 gal/min)
Pneumatic supply	
Min. pressure supply	5.5 bar (79.8 PSI)
Min. capacity required	200 NI/min
Lubrication	
Spindle	Grease
Caged ball ways	Oil / central lubrication
Ball screws	Oil / central lubrication
Dimensions	
Total height	3000 mm (118.1")
Dimensions L x D	2880 x 3230 mm (113.4 x 127.2")
Weight	9200 kg (20,283 lb)

Highlights MAXXMILL 500

- 5-axis machining in only one setup
- Top thermostability
- Top machining precision
- Mechanical or motor spindle
- Compact machine design
- Cutting-edge control technology from Siemens or Heidenhain
- Very attractive price/performance
- Made in the Heart of Europe

Produced parts



tuV
CERT
EN ISO 9001
Zertifikat Nr. 20 100 20419
www.tuv.at

EMCO Maier Ges.m.b.H.

Salzburger Str. 80
5400 Hallein
AUSTRIA
Phone: +43-6245/891-0
Fax: +43-6245/86965
info@emco.at

www.emco-world.com